

JOE WEIDER'S  
**OLYMPIA**  
AMATEUR EUROPE  
PRAGUE 2014



# Olympia Amateur EUROPE

Inspection  
report

PRAGUE  
2014

June 5-7th, 2014  
Czech Rep.



For additional information, registration and tickets, please visit:

[www.olympiaamateur.com](http://www.olympiaamateur.com)



# Olympia Amateur EUROPE

## 2014

### Prague, Czech Republic

- Men´s Bodybuilding 4 categories
- Men´s Physique 2 categories
- Women´s Fitness 2 categories
- Women´s Physique 2 categories
- Bikini 3 categories

**PRO CARD FOR ALL OVERALL WINNERS!!!**



For additional information, registration and tickets, please visit:

[www.olympiaamateur.com](http://www.olympiaamateur.com)



## WELCOME

Welcome to the first edition of the **Olympia Amateur EUROPE in PRAGUE**.

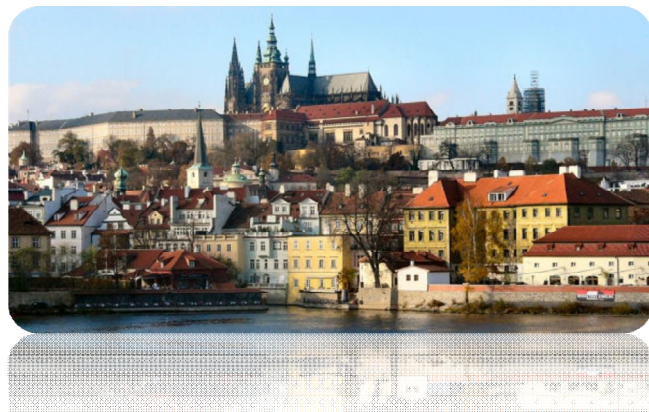
Next to Evls Prague Pro show, this will be the second the most famous event arrangement by SHP Prague company. The **Olympia Amateur** contest has been held with a few categories in the UK (2010), in Kuwait (2012) and in Bahrain in 2013. For the women bikini-fitness category, the Olympia Amateur has been held in Prague, Czech Republic since 2011.

**For the first time in the history** of amateur competitions, this event will be comparable in scale with professional contest **Mr.Olympia** arranged every year in **Las Vegas**.

Moreover, **FITNESS EXPO** definitely will be part of the weekend in Prague. Everyone who will join the contest and will come to support athletes, will have the possibility to visit the exhibitions of sport equipment and nutritional supplements mainly in the field of fitness and bodybuilding. The Expo will take place at the same place (same hall) as the Olympia Amateur event - **Tipsport arena**.

## LOCATION

The Olympia Amateur EUROPE 2014 will be held in the capital city of the Czech Republic, Prague. Prague is often referred to as the „historical pearl of the Europe“ and is one of the most beautiful cities in the world with unique and unforgettable atmosphere. We´re looking forward to see you here soon !



For additional information, registration and tickets, please visit:

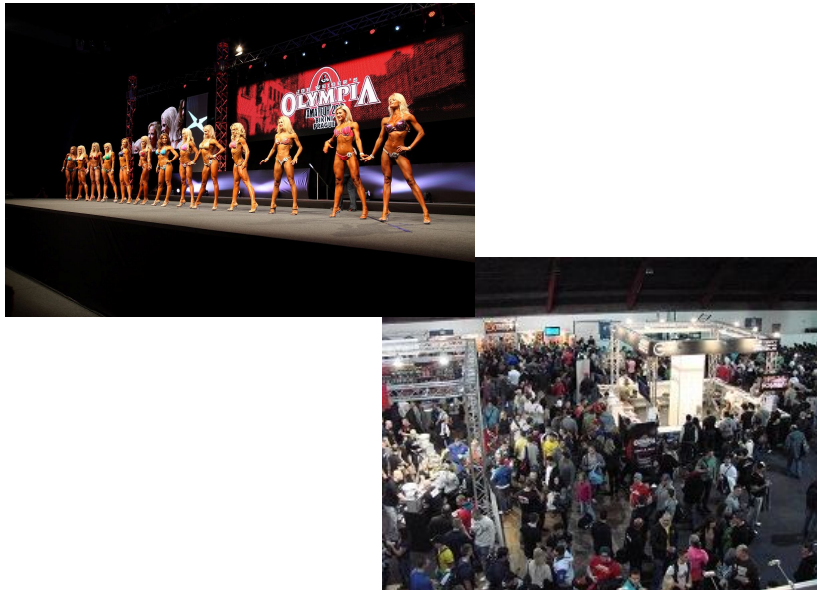
[www.olympiaamateur.com](http://www.olympiaamateur.com)



## VENUE

**Semifinal & Final of The Olympia Amateur EUROPE 2014 will be held in TIPSPORT Arena together with Fitness Expo.**

TIPSPORT Arena is a multifunctional arena that can be within few hours transformed from ice-hockey stadium to a concert hall or a top-class fashion parade.



The capacity of the venue is almost 12.000 seats (4.000 for the competition).



<http://tipsportarena-praha.cz>



For additional information, registration and tickets, please visit:

[www.olympiaamateur.com](http://www.olympiaamateur.com)



RECOMMENDED IFBB HOTELS

## 1. HOTEL EXPO – check point for any assistance

**Category:** 4 stars

**Address:** Hotel Expo Výstaviště  
Za Elektrárnou 3 170 00 PRAHA

**Price: Double room,**  
breakfast included: **80€**

**Single room, breakfast included: 70Euro**

Website: <http://www.expoprag.cz/home-page/>



## 2. PARKHOTEL PRAGUE

**Category:** 4 stars

**Address:** Parkhotel Prague  
Veletržní 20, 170 00 Prague 7

**Price per room: Double room,**  
breakfast included: **80 Euro**

**Single room, breakfast included: 70Euro**

Website: <http://www.parkhotel-praha.cz/en/photogallery/>



For additional information, registration and tickets, please visit:

[www.olympiaamateur.com](http://www.olympiaamateur.com)





### 3. HOTEL TRISTAR OLYMPIK

**Category:** 3 stars

**Address:** Hotel Olymik Tristar

U Sluncové 14, 186 76 Prague 8

**Price: Double room,**

breakfast included: **60Euro**

**Single room, breakfast included: 70Euro**

Website: <http://en.olympik.cz/tristar>



### 4. HOTEL OLYMPIK

**Category:** 4 stars

**Address:** Hotel Olymik

U Sluncové 14, 186 76 Prague 8

**Price: Double room,**

breakfast included: **70Euro**

**Single room, breakfast included: 80Euro**

Website: <http://en.olympik.cz/tristar>



For additional information, registration and tickets, please visit:

[www.olympiaamateur.com](http://www.olympiaamateur.com)



All rooms must be booked at the latest with the deadline of the final nomination – **16th MAY 2014**, moreover **16th MAY 2014** is also the latest date for any removal of nominated competitors, cancellation of booked hotel rooms or changes. If not cancelled in time, federations have to pay the reserved hotel rooms.

**Please note:**

**All these recommended hotels are fully reserved for the athletes and officials only. Promoters of the Olympia Amateur Europe have managed to significantly reduce the cost for athlete's rooms in hotels and recommend to accommodate in there.**

**ACCOMMODATION PROVIDED THROUGH THE PROMOTER OF THE EVENT, PLEASE FOR FURTHER INFORMATION CONTACT US VIA EMAIL: [info@olympiaamateur.com](mailto:info@olympiaamateur.com) PHONE +420 702 201 491**

**Please reserve your rooms well in advance.**

**IMPORTANT NOTICE! HOTEL DEPOSITS**

An initial deposit of **100€** per person is required upon check-in for incidental and personal expenses which may arise (telephone, mini-bar, laundry, room service, etc.). The unused portion of this deposit will be refunded at check-out. In order to facilitate matters, the chief delegate or team leader will be asked to provide a credit card or cash to cover the deposit for the entire team. This individual will be fully responsible for all expenses incurred by any member of his team.



For additional information, registration and tickets, please visit:

[www.olympiaamateur.com](http://www.olympiaamateur.com)





## IMPORTANT ARRIVAL AND CHECK-IN NOTICES

**The official arrival day for the athletes is Thursday June 5<sup>th</sup>, 2014.**

The presentation and registration will be conducted on Thursday. IFBB Registration fee of € 250 will have to be paid at the time of presentation. We fully recommend you to make advance payment online at [www.ifbb.com/registration](http://www.ifbb.com/registration) by **Debit/Credit card** or **PayPal** for your best comfort and convenience. If registration fee has been paid in advance, please bring the confirmation of your payment with you to the registration.

Registration will take place at **TIPSPORT ARENA- ENTRY GATE no.32**

- Registration/Accreditation between 10:00am and 8:00pm on Thursday, June 5<sup>th</sup> in TIPSPORT ARENA
- Pawel Filleborn's seminar for.....
- Amateur Olympia Europe Semifinals starts on Friday 6<sup>th</sup> 10am in Tipsport Arena
- EXPO starts on Friday 6<sup>th</sup> of June at 9AM (TIPSPORT Arena)
- Final for Olympia Amateur Europe COMPETITORS will run on Saturday 7<sup>th</sup> June (TIPSPORT Arena)
- Banquet Olympia Amateur Europe on Saturday 7<sup>th</sup> at 10PM – ticket may be purchased in advance at [www.olympiaamateur.com](http://www.olympiaamateur.com)

**Note: ALL Overall Winners of Olympia Amateur EUROPE 2014 will receive Pro Card**

For regular updates, more information about running order and other competition details, please visit [www.olympiaamateur.com](http://www.olympiaamateur.com) and [www.ifbb.com](http://www.ifbb.com).



For additional information, registration and tickets, please visit:

[www.olympiaamateur.com](http://www.olympiaamateur.com)



## COMPETITOR NOTIFICATION

**The competitors can register through their National Federations only.** National Federations will fill in and confirm the enclosed entry form and send over to the organiser of the competition in the given deadline date for submitting.

**No other way of registration will be accepted.**

## REGISTRATION AND REGISTRATION FEE

Each National Federation will register their competitors with the enclosed entry form and send to via email directly to

IFBB General Secretary ([w.tierney@ifbb-uk.com](mailto:w.tierney@ifbb-uk.com))

IFBB Head Office in Madrid ([internacional@santonja.com](mailto:internacional@santonja.com))

and important to send copy to [info@olympiaamateur.com](mailto:info@olympiaamateur.com) with **photos for accreditation!**

The final decision to allow an athlete to compete in this event, rests with the IFBB.

Registration fee for athletes to enter this competition is €250 which can be paid in advance online on the IFBB website, by following the link <http://www.ifbb.com/registration> for your best comfort and convenience. If not paid in advance, the Registration fee will be collected at the time of accreditation.

## IMPORTANT INFORMATION

All the costs for travelling, hotel accommodations, transport from and to the airport and meals are the responsibilities of the national federations or individual athletes. Check with your national federation for more information. List of recommended hotels, transport and contacts are provided in the Inspection Report, see below.



For additional information, registration and tickets, please visit:

[www.olympiaamateur.com](http://www.olympiaamateur.com)



## ENTRY FORM CONTACT DETAILS

The entry form is included at the end of this document.

All entry forms and correspondence should be addressed to IFBB General Secretary William TIERNEY [w.tierney@ifbb-uk.com](mailto:w.tierney@ifbb-uk.com) and the IFBB Head Office, Madrid [internacional@santonja.com](mailto:internacional@santonja.com). It is important to copy your entry form to [info@olympiaamateur.com](mailto:info@olympiaamateur.com)

The deadline date for submitting the entry forms is **May 16<sup>th</sup>, 2014**.  
**We strongly encourage you to register early at your National Federations**

**PLEASE SEND ALL ENTRY FORMS and PHOTOS FOR ACCREDITATION (no later than May 16<sup>th</sup>, 2014) TO:**

**IFBB General Secretary**

William Tierney

Phone: +44 151 9314090

E-mail: [w.tierney@ifbb-uk.com](mailto:w.tierney@ifbb-uk.com)

Please send a copy to:

**IFBB President**

Dr. Rafael Santonja

Phone: +34 91 535 2819

Fax: +34 91 6361270

E-mail: [internacional@santonja.com](mailto:internacional@santonja.com)

**The Olympia Amateur Europe manager**

Michaela Kovacova

Phone: +420 702 201 491

E-mail: [info@olympiaamateur.com](mailto:info@olympiaamateur.com)



For additional information, registration and tickets, please visit:

[www.olympiaamateur.com](http://www.olympiaamateur.com)



IFBB National Federations are informed that participation in to this championship is **unlimited**. Remember that all athletes will have to produce their IFBB International Card at the registration. Any athlete who has not yet purchase this IFBB International Card will have to buy one at registration. IFBB cards are 30 Euros per year and mandatory from 2011.

### **POSING MUSIC**

All posing music -60 seconds for bodybuilding and 90 seconds for fitness- must be on an audio CD only. The posing music must also be at the start of the CD. Each competitor must affix his name on the CD for easy identification. The use of profane, vulgar and offensive language is strictly prohibited in the posing music.

### **Judges:**

All National Federations are reminded that their nominations for judges must be also included in the Entry Forms according to the the Rules. Please for more information contact Mr. Pawel Filleborn at [pawelfilleborn@gmail.com](mailto:pawelfilleborn@gmail.com)

### **Press accreditation:**

Any press representatives that wish to obtain press accreditation for this event have to register upon arrival and contact Organization Committee via mail:

[info@olympiaamateur.com](mailto:info@olympiaamateur.com)



For additional information, registration and tickets, please visit:

[www.olympiaamateur.com](http://www.olympiaamateur.com)



## CATEGORIES OLYMPIA AMATEUR EUROPE 2014:

### CATEGORIES WOMEN

#### FITNESS

- Up to 163 cm
- Over 163 cm

#### PHYSIQUE

- Up to 163 cm
- Over 163 cm

#### BIKINI

- Up to 163 cm
- Up to 168 cm
- Over 168 cm

### CATEGORIES MEN

#### MEN'S BODYBUILDING

- Up to 80kg
- Up to 90kg
- Up to 100kg
- Over 100kg

#### MEN'S PHYSIQUE

- Up to 178 cm
- Over 178 cm



For additional information, registration and tickets, please visit:

[www.olympiaamateur.com](http://www.olympiaamateur.com)



## **SCHEDULE OF THE The Olympia Amateur EUROPE 2014**

### **Thursday June 5<sup>th</sup>, TIPSPORT ARENA**

- 10:00 am – 08:00 pm Accreditation/ registration (athletes, judges, delegates, guests)
- 04:30pm Judges meeting
- 05:00pm Seminar with Pawel Filleborn: contact [pawelfilleborn@gmail.com](mailto:pawelfilleborn@gmail.com)
- 06:00pm Competitors meeting (TIPSPORT ARENA)

### **Friday June 6<sup>th</sup>, TIPSPORT Arena, Press Centrum**

- 09:00 am Start EXPO Fitness
- 10:00 am Predjudging all day

### **Saturday June 7<sup>th</sup>, TIPSPORT Arena**

- 09:00 am Start EXPO Fitness
- 06:00 pm Finals – open ceremony
- 10:00 pm Banquet (Park Hotel)- tickets available online on website

### **Sunday June 8<sup>th</sup>, TIPSPORT Arena**

- Departure all day



For additional information, registration and tickets, please visit:

[www.olympiaamateur.com](http://www.olympiaamateur.com)





## International Federation of Bodybuilding & Fitness

### ENTRY FORM

**IFBB OLYMPIA AMATEUR EUROPE  
PRAGUE, CZECH REPUBLIC, 5-7 JUNE 2014**

**Deadline date to send the Entry Form is May 16<sup>th</sup>, 2014.**

**CATEGORY:**

COUNTRY	PRESIDENT NAME	FEDERATION NAME	
CONTACT No FEDERATION (OFFICE OR CELL PHONE)		EMAIL FEDERATION	
	If applicable: Responsible Delegate(s) name at this	Cell phone	PASSPORT NR
1			
	Competitor NAME:	CATEGORY	PASSPORT NR
1			
2			
3			
4			
5			
6			
7			
8			
9			
10			

**IF YOU HAVE MORE ATHLETES AND/OR DELEGATES, PLEASE ADD THEM ON THE PAGE BELOW.**



For additional information, registration and tickets, please visit:

[www.olympiaamateur.com](http://www.olympiaamateur.com)



**ALL THE COSTS FOR TRAVELLING, HOTEL ACCOMMODATIONS AND MEALS (AND TRANSPORT FROM AND TO THE AIRPORT) MUST BE COVERED BY THE NATIONAL FEDERATIONS. HOTEL RESERVATION MUST BE DONE BY DIRECT COMMUNICATION BETWEEN THE NATIONAL FEDERATION AND PROMOTER (List of recommended hotels and contacts are provided in the Inspection Report). THE ORGANIZING COMMITTEE OR IFBB WILL NOT BE RESPONSIBLE FOR ANY RESERVATION OR PAYMENT OF HOTEL ACCOMMODATIONS, TRAVELLING ARRANGEMENTS AND MEALS.**

#### **IMPORTANT NOTES:**

**The Organizer of the event in PRAGUE, CZECH REPUBLIC will not accept any direct registration from athletes.**

**Entry Forms from athletes will only be considered if they are sent by the National Federation of the athlete and directly to IFBB Head office in Madrid and IFBB General Secretary Mr William Tierney (see email addresses below). The final decision to allow an athlete to compete in this event rests with the IFBB.**

**Registration fee is 250 EUROS per athlete and will have to be paid to the IFBB official when registering or preferably online if you have a Paypal account. You can pay in advance online on the IFBB website, by following this link: <http://www.ifbb.com/registration>**

**The categories accepted for the Olympia Amateur EUROPE are:**

#### **CATEGORIES WOMEN**

<b>FITNESS</b>	<b>Up to 163 cm /Over 163 cm</b>
<b>PHYSIQUE</b>	<b>Up to 163 cm /Over 163 cm</b>
<b>BIKINI</b>	<b>Up to 163 cm/ Up to 168 cm / Over 168 cm</b>

#### **CATEGORIES MEN**

<b>MEN'S BODYBUILDING</b>	<b>Up to 80kg/ Up to 90kg/ Up to 100kg/ Over 100kg</b>
<b>MEN'S PHYSIQUE</b>	<b>Up to 178 cm/ Over 178 cm</b>



For additional information, registration and tickets, please visit:

[www.olympiaamateur.com](http://www.olympiaamateur.com)



**Please send Entry Form no later than May 16<sup>th</sup> 2014 to:**

**(Preferably by email)**

**IFBB General Secretary**

**William Tierney**

Phone: +44 151 9314090

E-mail: [w.tierney@ifbb-uk.com](mailto:w.tierney@ifbb-uk.com)

**Please Send a copy to:**

**International Federation of Bodybuilding and Fitness**

**Dr. Rafael Santonja**

**IFBB President**

Phone: +34 91 535 2819

Fax: +34 91 636 1270

E-mail: [internacional@santonja.com](mailto:internacional@santonja.com)

**IMPORTANT : Please Send a copy with photo's to :**

**manager of Olympia Amateur Europe  
Miss Michaela Kovacova**

Phone: +420 702 201 491

e-mail: [info@olympiaamateur.com](mailto:info@olympiaamateur.com)

**ADDITIONAL ATHLETES:**

**NAME:**

**CATEGORY**

**PASSPORT**

**NR**

NAME:	CATEGORY	PASSPORT



For additional information, registration and tickets, please visit:

[www.olympiaamateur.com](http://www.olympiaamateur.com)



## ARRIVALS/ TRANSPORTATION:

Transport from Vaclav Havel Airport Prague to official hotels in Prague :

**25 € per person / return way**

Price of transport must be paid at arrival in registration office. Any national team will not be accredited until the reserved transportation has been paid. Please send therefore your detailed travel itinerary to [info@olympiaamateur.com](mailto:info@olympiaamateur.com) , the transfer can be provided. If you order the transport, you must pay for it even if you later decide not to use it after Your arrival.

ARRIVAL DATE	AIRLINE	FLIGHT No	TIME	DEPARTURE DATE	AIRLINE	FLIGHT No	TIME

For any transport assistance, please contact directly via mail to:

[info@olympiaamateur.com](mailto:info@olympiaamateur.com)



For additional information, registration and tickets, please visit:

[www.olympiaamateur.com](http://www.olympiaamateur.com)